

KLANAD/RUGS

Hand-knotted carpets from Nepal

Quality carpet delivery
program:

KATHMANDU (40 knots)

DURBAR (60 knots)

BHAKTAPUR (80 knots)

HANUMAN (80 knots)

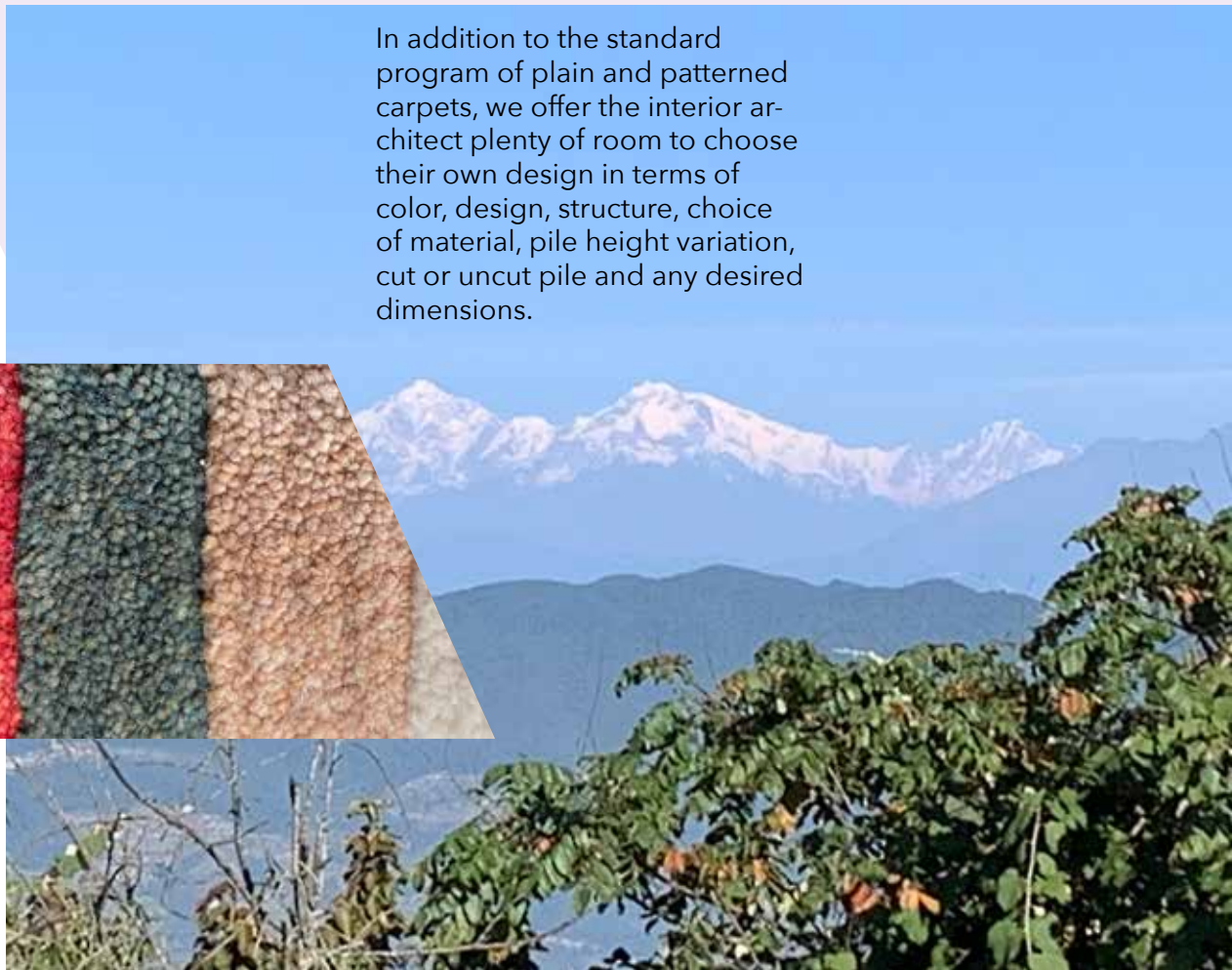
PATAN (80 knots)

BARBAR MAHAL (100 knots)

ANNAPURNA (100 knots)

BASANTAPUR (100 knots)

In addition to the standard program of plain and patterned carpets, we offer the interior architect plenty of room to choose their own design in terms of color, design, structure, choice of material, pile height variation, cut or uncut pile and any desired dimensions.



KLAN@VISOR

Karel Lansu Advice

QUALITY KATHMANDU

Consists of 100% wool from Himalayan sheep and a base of 100% cotton weft (horizontal) and warp (vertical).
With 40 knots per 10 cm of 3 threads/knot, a pile height of 12 mm and a weight of 5.5 kg/m², an exceptionally heavy quality carpet that is almost indestructible.



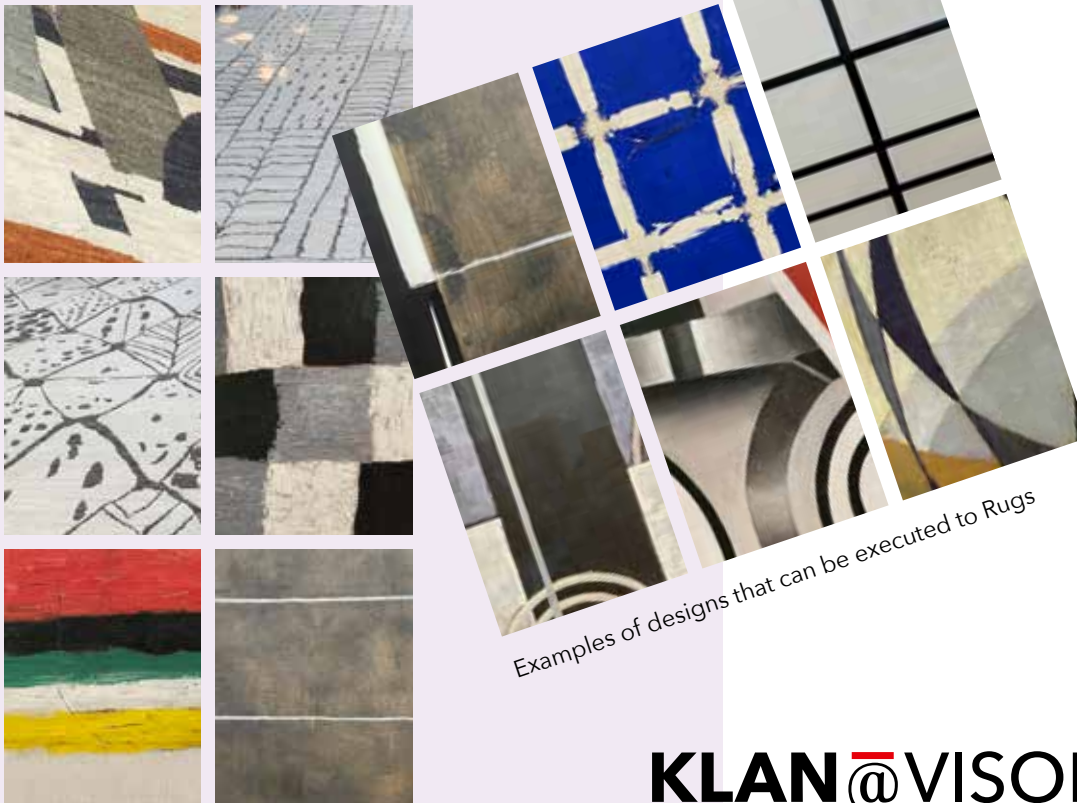
Can be made in any desired uni color and also in a simple design, adapted to your interior.

After the drawing and colors have been agreed, a realistic test sample or strike-off is

knotted of the desired carpet made with the yarn and color of your choice.



Detailed photo Kathmandu



Examples of designs that can be executed to Rugs

KLANAD/RUGS

Hand-knotted carpets from Nepal

KLAN@VISOR

Karel Lansu Advice

QUALITY DURBAR

Consists of 100% wool from Himalayan sheep and a base of 100% cotton weft (horizontal) and warp (vertical). With 60 knots per 10 cm of 2 threads/knot, a pile height of 7 mm and a weight of 5.5 kg/m², an exceptionally durable quality carpet that is almost indestructible.

Can be made in any desired uni color and in a simple design, completely adapted to your interior.



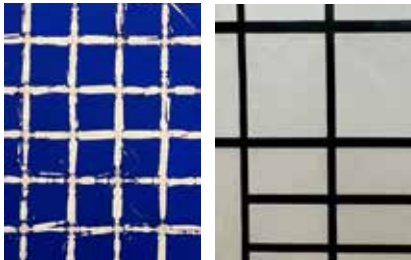
Durbar 60 knots

Detailed photo Durbar



KLANAD/RUGS

Hand-knotted carpets from Nepal



After the drawing and colors have been agreed, a realistic test sample or strike-off is knotted of the desired carpet made with the yarn and color of your choice.



Examples of designs that can be executed to Rugs

KLAN@VISOR

Karel Lansu Advice

QUALITY BHAKTAPUR

Consists of 66% wool from Himalayan sheep, 17% Tibetan silk and 17% Nepalese linen with a base of 100% cotton weft (horizontal) and warp (vertical). With 80 knots per 10 cm of 3 threads/knot wool, 4 threads/knot silk and linen, a pile height of 5 mm, with cut pile as well as uncut pile (bouclé) and a weight of 5 kg/m², a well-balanced complex quality carpet, which is almost indestructible.

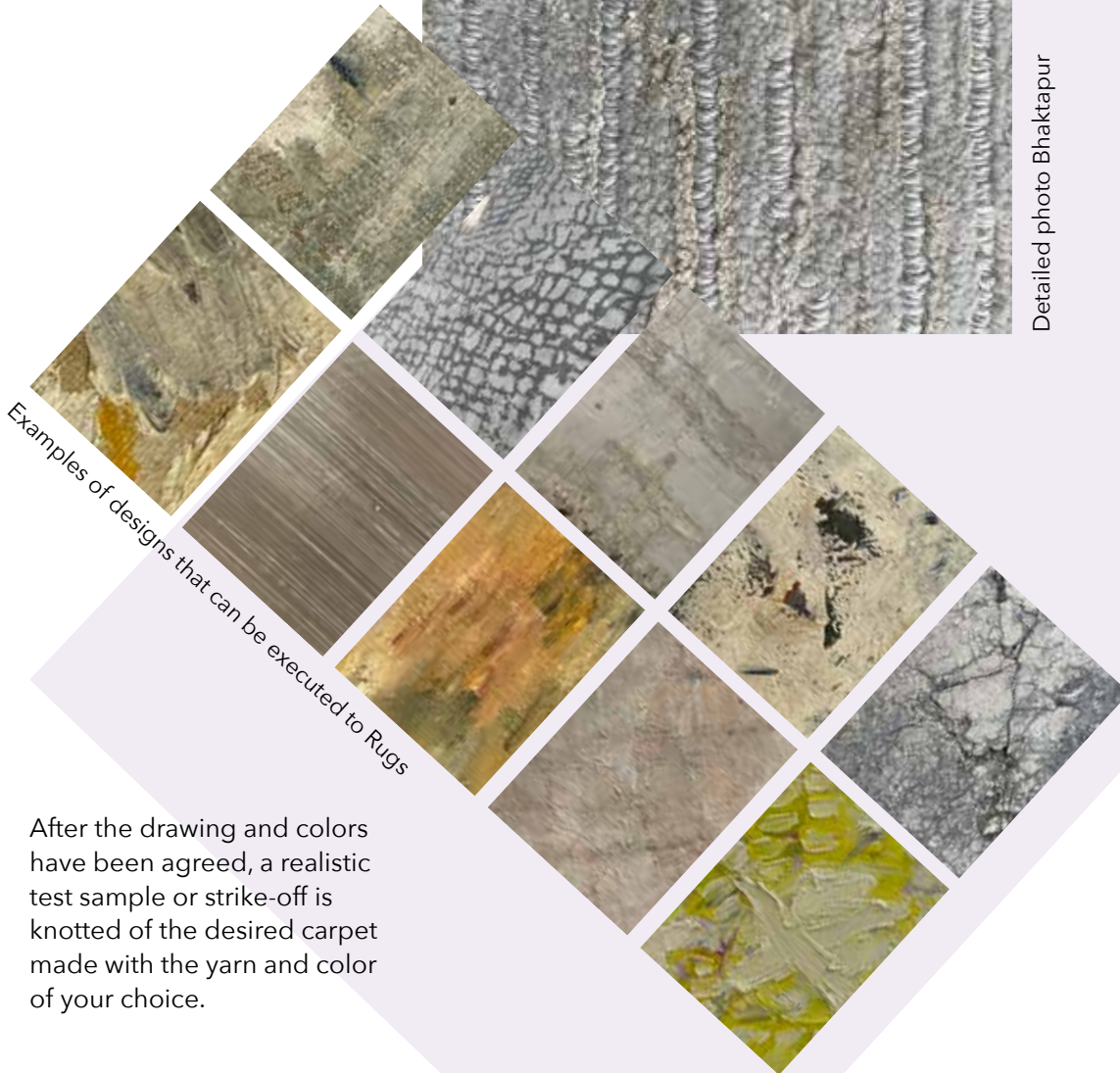
Can be made in any desired color and design, completely adapted to your interior.



Bhaktapur 80 knots



Detailed photo Bhaktapur



Examples of designs that can be executed to Rugs

After the drawing and colors have been agreed, a realistic test sample or strike-off is knotted of the desired carpet made with the yarn and color of your choice.

KLANAD/RUGS

Hand-knotted carpets from Nepal

KLAN@VISOR

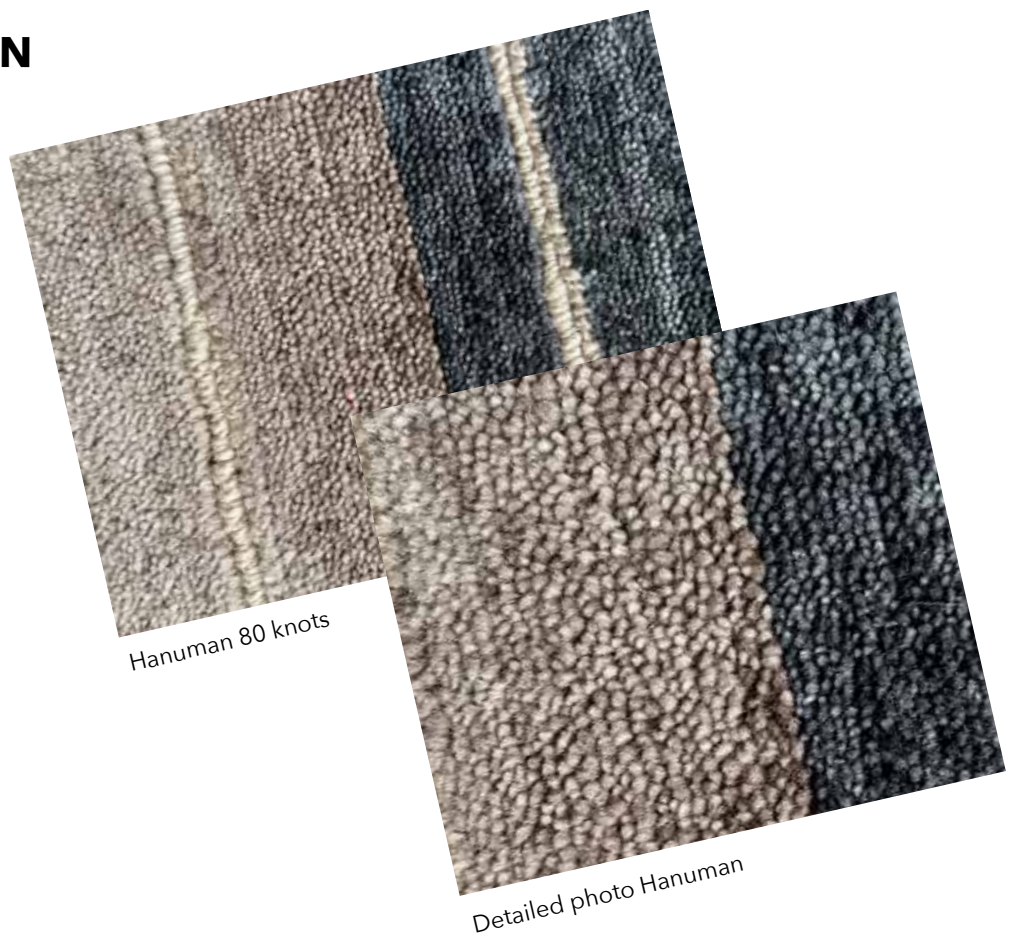
Karel Lansu Advice

QUALITY HANUMAN

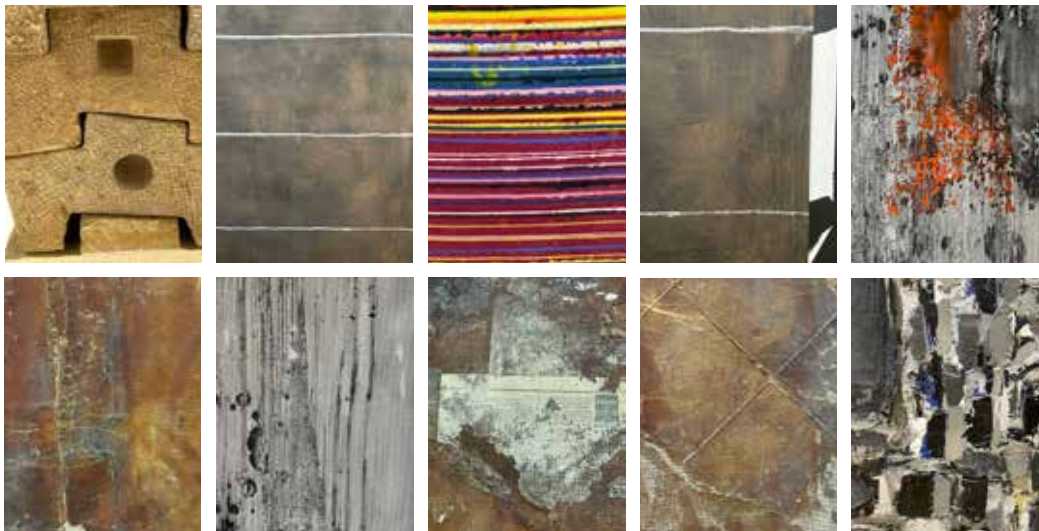
Consists of 100% wool from the Himalayan sheep, a base of 100% cotton weft (horizontal) and warp (vertical). With 80 knots per 10cm of 2 threads/knot, an alternating pile height of 4 and 5mm and a weight of 5 kg/m², an exceptional quality carpet with cut pile at varying heights, which gives a particularly lively effect and is almost indestructible.

Can be made in any desired color and design, adapted to your interior.

After the drawing and colors have been agreed, a realistic test sample or strike-off is knotted of the desired carpet made with the yarn and color of your choice.



Examples of designs that can be executed to Rugs



KLANAD/RUGS

Hand-knotted carpets from Nepal

KLAN@VISOR

Karel Lansu Advice

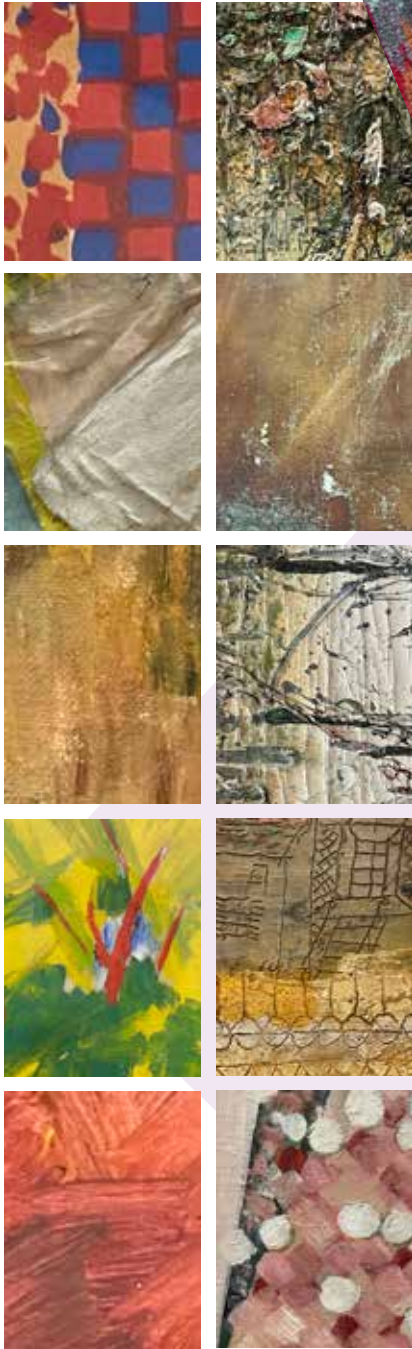
QUALITY PATAN

Consists of 100% Wool from the Himalayan sheep, a base of 100% cotton weft (horizontal) and warp (vertical).

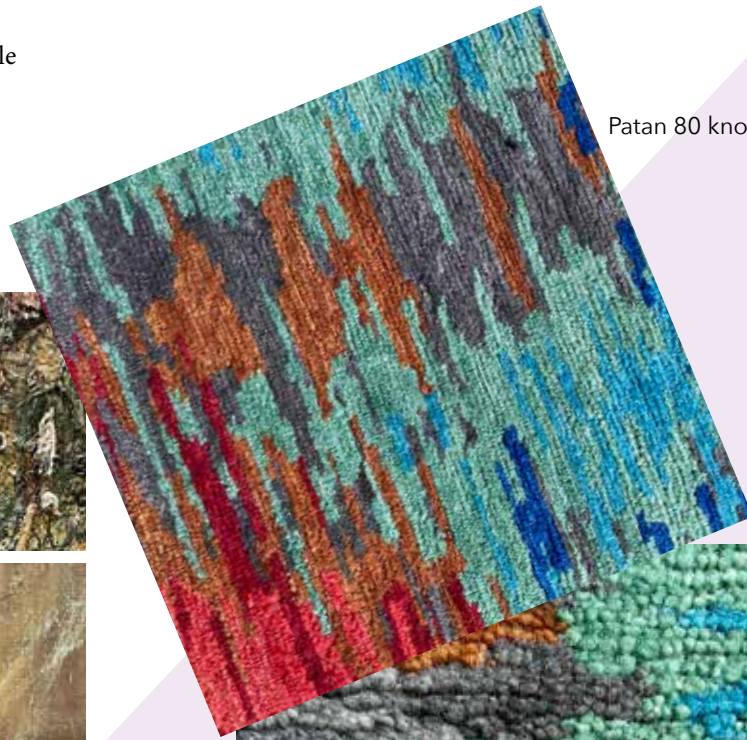
With 80 knots per 10cm of 2 threads/knot, an alternating pile height of 4 and 5mm and a

weight of 5 kg/m², an exceptional quality carpet with cut pile at varying heights, which gives a particularly lively effect and is almost indestructible.

Can be made in any desired color and design, adapted to your interior. your interior.



Examples of designs that can be executed to Rugs



Patan 80 knots



Detailed photo Patan

After the drawing and colors have been agreed, a realistic test sample or strike-off is knotted of the desired carpet made with the yarn and color of your choice.

KLANAD/RUGS

Hand-knotted carpets from Nepal

KLAN@VISOR

Karel Lansu Advice

QUALITY BABAR MAHAL

Consists of 62% wool from the Himalayan sheep, 38% Tibetan silk and a base of 100% cotton weft (horizontal) and warp (vertical).
With 100 knots per 10cm of 1 thread/knot of wool, 3 threads/knot Silk, a pile height of 5 and 3 mm and a weight of 5 kg/m², a quality carpet, with exceptional allure and an almost indestructible structure.

Can be made in any desired color and design, adapted to your interior.



Babar Mahal 100 knots



Detailed photo Babar Mahal

KLANAD/RUGS

Hand-knotted carpets from Nepal



Examples of designs that can be executed to Rugs



After the drawing and colors have been agreed, a realistic test sample or strike-off is knotted of the desired carpet made with the yarn and color of your choice.

KLAN@VISOR

Karel Lansu Advice

QUALITY ANNA PURNA

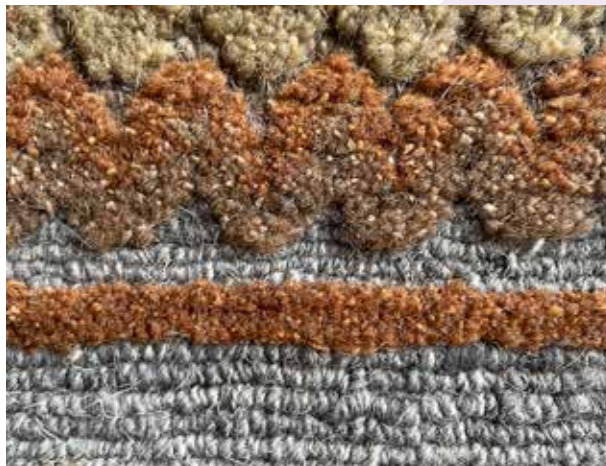
Consists of 85% wool from the Himalayan sheep, 15% Nepali Linen and a base of 100% cotton weft (horizontal) and chain (vertical). With 100 knots per 10cm of 3 and 2 threads/button Wool, 1 thread/button Linen, different pile heights of 5 and 3mm, varying with cut pile and non-cut pile (bouclé) and a weight of 4.5 kg/m². very complex quality carpet, with refined allure and an almost indestructible structure.

Can be made in any desired color and design, adapted to your interior.

After the drawing and colors have been agreed, a realistic test sample or strike-off of the desired carpet is made with the yarn and color of your choice.



Annapurna 100 knots



Detailed photo Annapurna



Examples of designs that can be executed to Rugs

KLANAD/RUGS

Hand-knotted carpets from Nepal

KLAN@VISOR

Karel Lansu Advice

QUALITY BASANTAPUR

Consists of 47% Wool from the Himalayan sheep, 33% Tibetan Silk, 20% Nepalese Linen and a base of 100% cotton weft (horizontal) and warp (vertical).
With 100 knots per 10cm of 3 threads/knot of wool, 3 threads/button Silk and Linen, different pile heights of 5 and 3mm, varying with cut pile and non-cut pile (bouclé) and a weight of 4.5 kg/m², a very complex quality carpet, with exceptionally high Silk content and an almost indestructible structure.

Can be made in any desired color and design, adapted to your interior.
After the drawing and colors have been agreed, a realistic

test sample or strike-off of the desired carpet is made with the yarn and color of your choice.

Basantapur 100 knots



Detailed photo Basantapur

KLANAD/RUGS

Hand-knotted carpets from Nepal



Examples of designs that can be executed to Rugs

KLAN@VISOR

Karel Lansu Advice